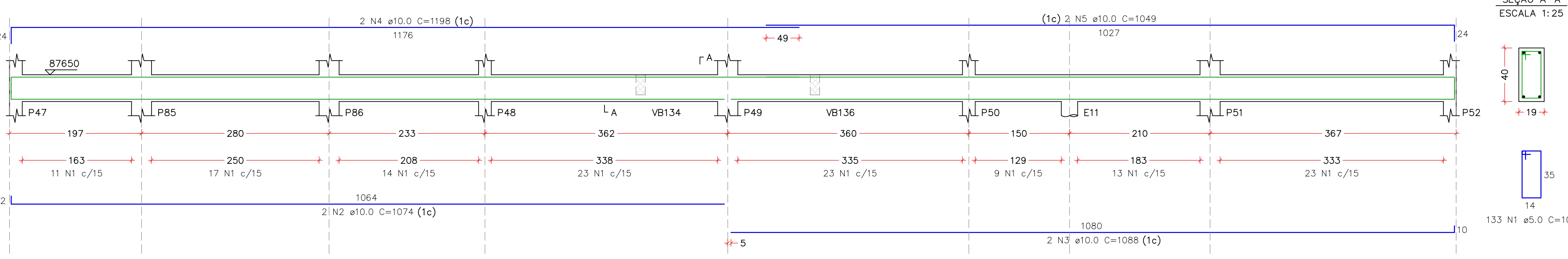
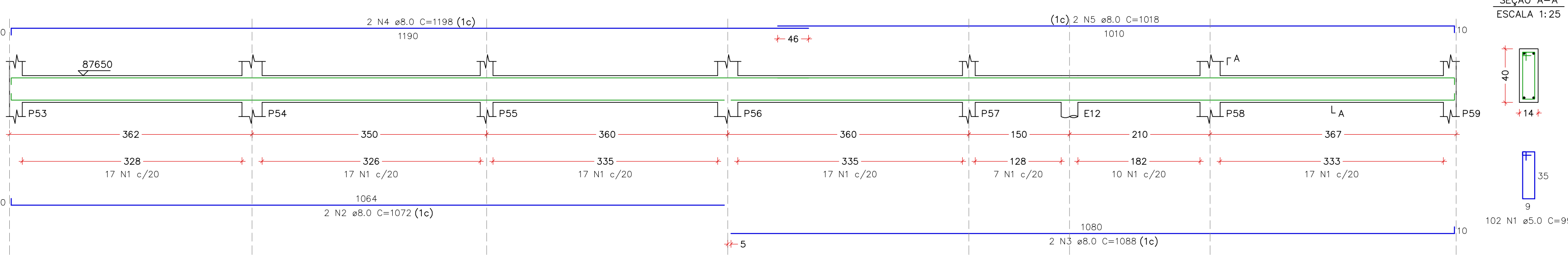


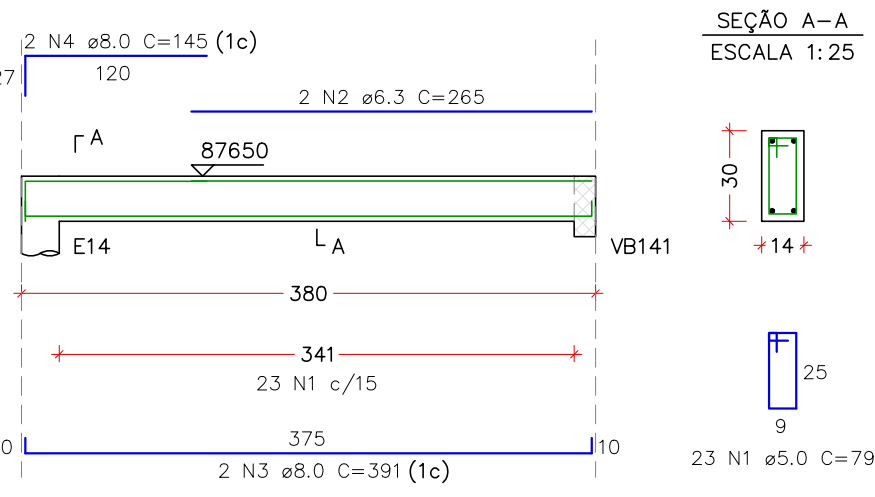
VB109  
ESCALA 1:50



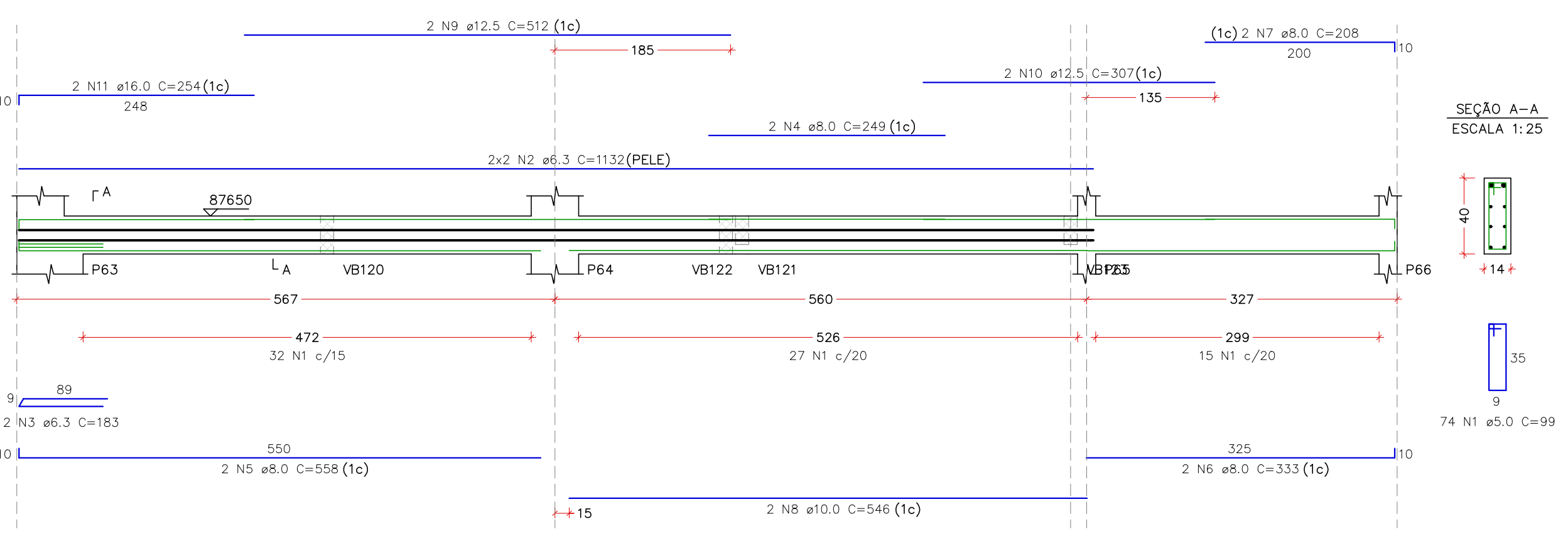
VB111  
ESCALA 1:50



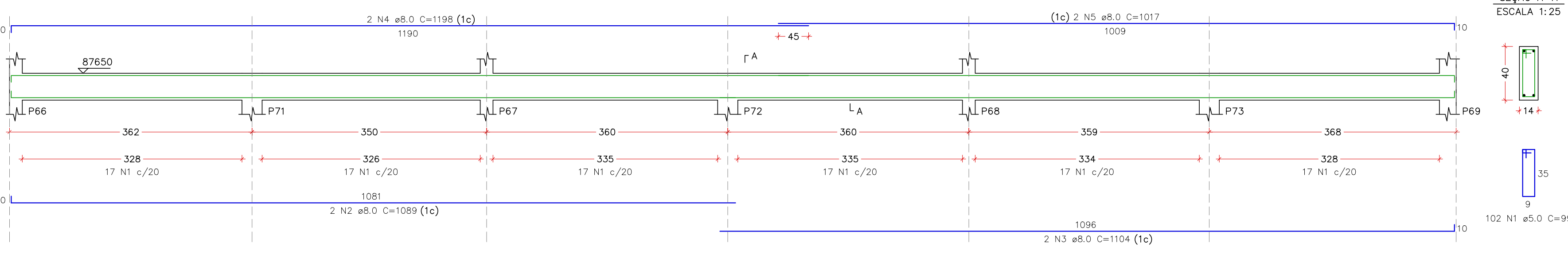
VB115  
ESCALA 1:50



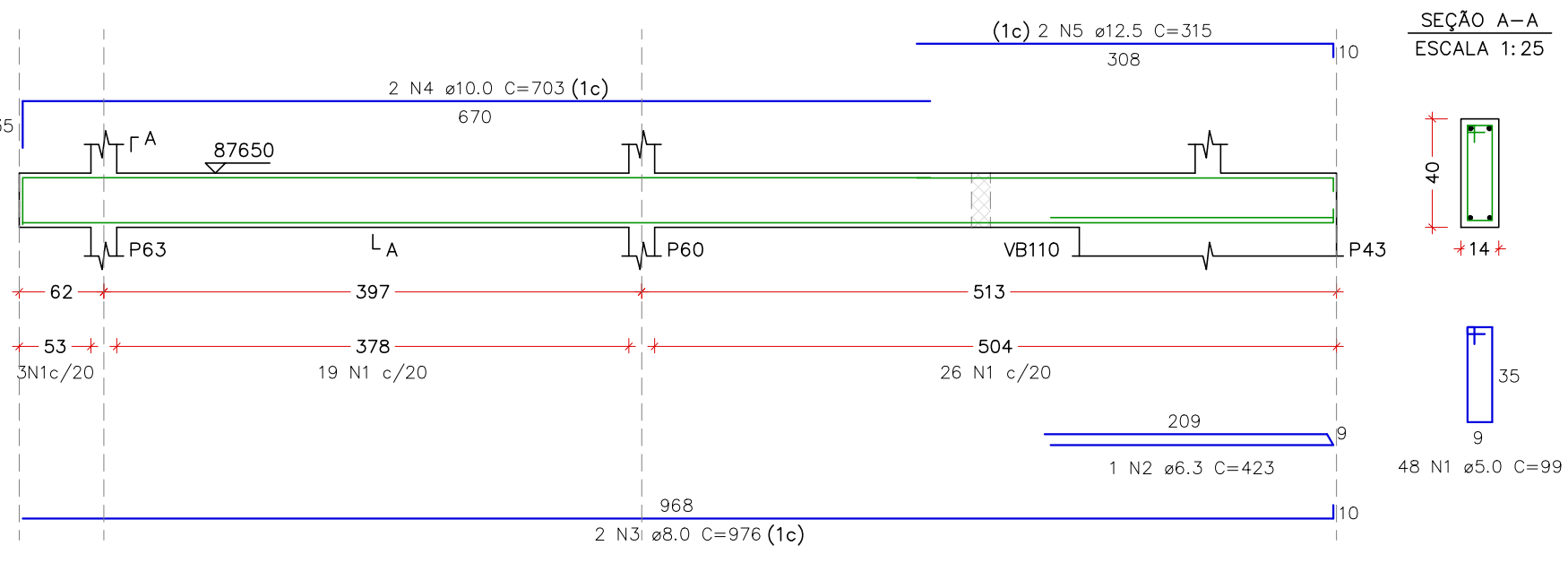
VB116  
ESCALA 1:50



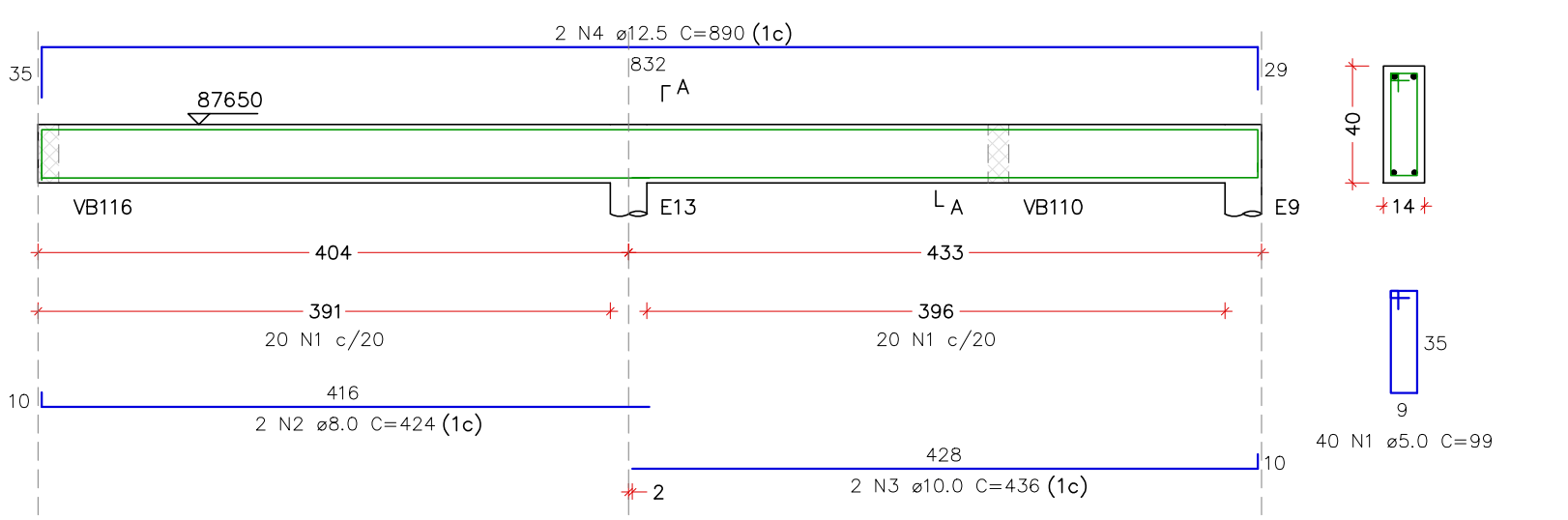
VB117  
ESCALA 1:50



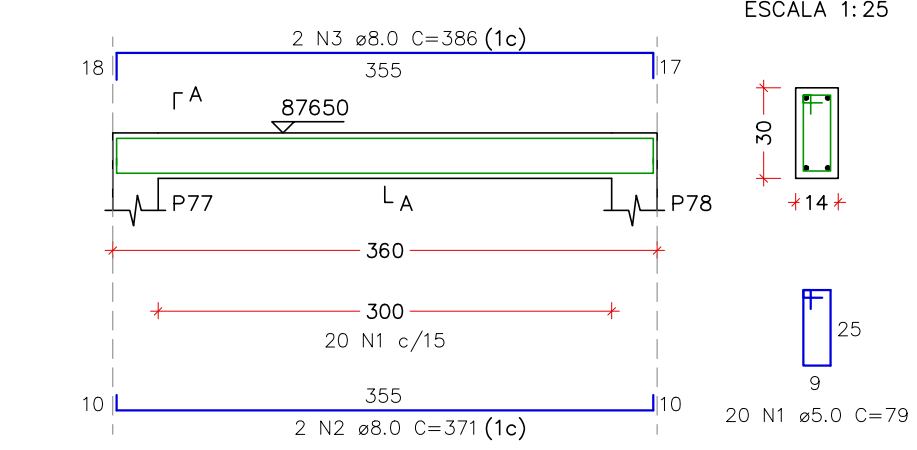
VB119  
ESCALA 1:50



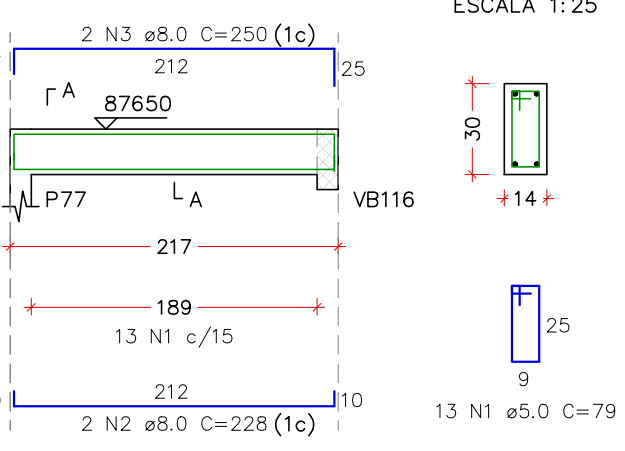
VB120  
ESCALA 1:50



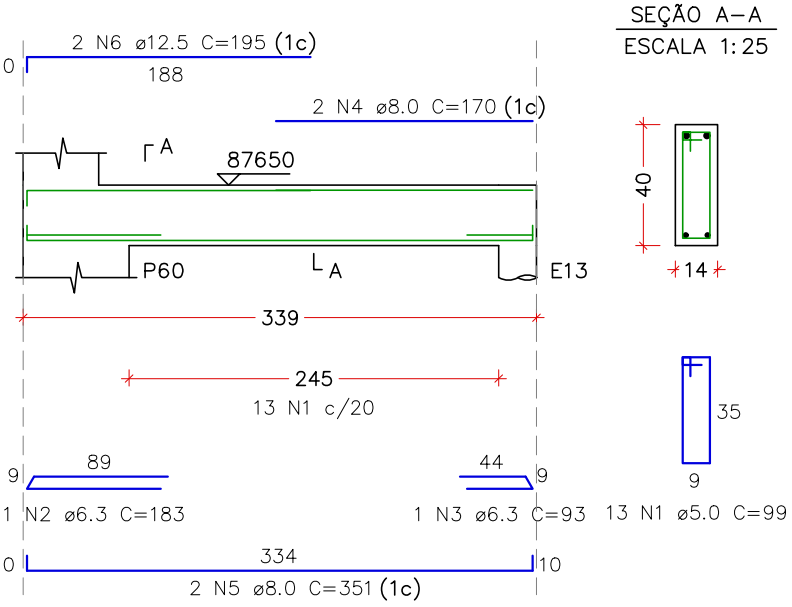
VB118  
ESCALA 1:50



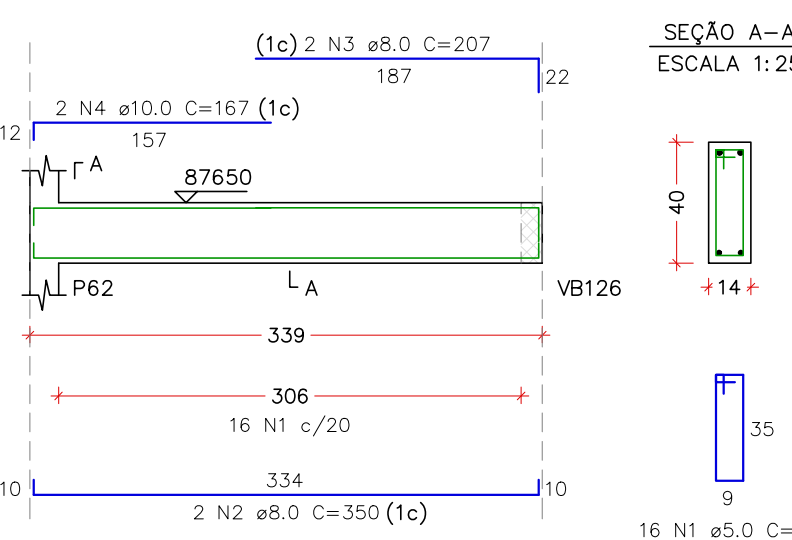
VB121  
ESCALA 1:50



VB112  
ESCALA 1:50



VB114  
ESCALA 1:50



RELAÇÃO DO AÇO – PAV. BALDRAME 1

ELEMENTO	AÇO	N	DIAM (mm)	QUANT	C.UNIT (cm)	C.TOTAL (cm)
VB109	CA50	1	5.0	133	109	14497.7
	CA50	2	10.0	2	1074	2148
	CA50	7	8.0	2	1088	2176
	CA50	4	10.0	2	1198	2398
	CA50	5	10.0	2	1049	2098
VB110	CA60	1	5.0	16	99	1584
	CA50	3	10.0	2	344	658
	CA50	2	8.0	102	99	888
	CA50	4	8.0	2	1072	2144
	CA50	4	8.0	2	1188	2176
VB111	CA50	1	5.0	13	98	1287
	CA50	2	6.3	1	183	183
	CA50	3	8.0	2	351	702
	CA50	4	8.0	2	170	340
	CA50	5	8.0	2	351	702
VB112	CA50	6	12.5	2	195	390
	CA50	3	8.0	2	18	36
	CA50	2	6.3	2	183	366
	CA50	4	8.0	2	55	110
	CA50	5	8.0	2	190	380
VB113	CA50	2	6.3	2	183	366
	CA50	3	8.0	2	190	380
	CA50	4	8.0	2	55	110
	CA50	5	8.0	2	190	380
	CA50	3	8.0	2	207	414
VB114	CA50	4	10.0	2	167	334
	CA60	1	5.0	23	79	1817
	CA50	2	6.3	2	265	530
	CA50	3	8.0	2	391	782
	CA50	4	8.0	2	145	290
VB115	CA60	1	5.0	74	99	7326
	CA50	2	6.3	4	1132	4528
	CA50	3	8.0	2	368	736
	CA50	4	8.0	2	249	498
	CA50	5	8.0	2	558	1116
VB116	CA50	6	8.0	2	333	666
	CA50	8	10.0	2	546	1092
	CA50	9	12.5	2	512	1024
	CA50	10	12.5	2	307	614
	CA50	11	16.0	2	254	508
VB117	CA60	1	5.0	102	99	10098
	CA50	2	8.0	2	1089	2178
	CA50	3	8.0	2	1104	2208
	CA50	4	8.0	2	1198	2396
	CA50	5	8.0	2	1017	2034
VB118	CA60	1	5.0	20	79	1580
	CA50	2	8.0	2	371	742
	CA50	3	8.0	2	386	772
	CA60	1	5.0	48	99	4752
	CA50	2	6.3	1	423	423
VB119	CA50	3	8.0	2	976	1952
	CA50	4	10.0	2	703	1406
	CA50	5	12.5	2	315	630
	CA60	1	5.0	40	99	3960
	CA50	2	8.0	2	424	848
VB120	CA50	3	10.0	2	436	872
	CA50	4	12.5	2	890	1780
	CA60	1	8.0	13	79	1027
	CA50	2	8.0	2	228	456
	CA50	3	8.0	2	250	500

RESUMO DO AÇO

AÇO	DIAM (mm)	C.TOTAL (m)	PESO ± 10% (kg)
CA50	6.3	71.5	19.2
CA50	8.0	300.7	130.6
CA50	10.0	132.1	89.6
CA50	12.5	44.4	47
CA50	16.0	5.1	8.8
CA60	5.0	613.9	104.1

PESO TOTAL (kg)  
CA50 265.2  
CA60 104.1

VOLUME DE CONCRETO (C=30) = 6.37 m³  
ÁREA DE FORMA = 98.84 m²



CONSTRUÇÃO DA ESCOLA MUNICIPAL ALEGRINHO

ENGENHEIRO  
RUA LOURDES DE SOUZA SANTOS, COLINA VERDE  
POUSO ALEGRE – MINAS GERAIS

ASSUNTO  
PROJETO ESTRUTURAL EM CONCRETO ARMADO  
DETALHAMENTOS  
VIGAS DO PAV. BALDRAME 1

DATA INICIAL  
02/02/2024

ESCALA  
INDICADA

REVISÃO  
R03

ARQUIVO  
DAC-PMPA-ALEG-PE-EST-R03.DWG

DISCIPLINA  
ESTRUTURAL

FASE DO PROJETO  
EXECUTIVO

FOLHA Nº  
28/53